

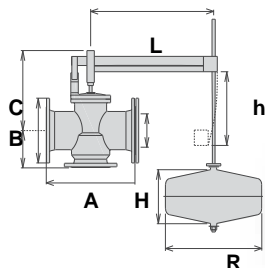
VG 201

CAST IRON BALL FLOAT VALVE - FLANGED PN16 UNI

Suitable for application
in both straight and
angular way

Temp. max. : 90°C
Press. max. : 16 bar

Application : cold water
Body : nodular castiron
Seat : Stainless steel
Lever : iron galvanized
ball : AISI 304
Ends details : PN16 flanged



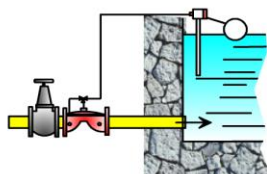
maximum flow rate L/s										
DN	40	50	65	80	100	125	150	200	250	300
angular	6,4	6,4	10	16	25	40	58	103	161	233
straight	5,1	5,1	8,6	13	20	31	45	81	127	183
code	DN	A	B	C	D	L	H	R	h	Kg
VG20108	40	230	82,5	173	165	600	Ø220		105	21
VG20109	50	230	82,5	173	165	600	Ø220		105	21
VG20110	65	290	92,5	193	185	600	Ø220		180	25,6
VG20111	80	310	100	212	200	800	200	300	210	32,6
VG20112	100	350	125	225	220	800	180	400	267	41
VG20113	125	400	125	230	250	800	180	400	267	49
VG20114	150	480	162	351	285	1000	250	400	400	78,5
VG20115	200	600	183	380	340	1000	250	400	418	118
VG20116	250	730	270	540	405	1220	300	500	510	162
VG20117	300	850	300	610	460	1400	400	500	610	250

VH 103

Threaded F/F and UNI Flanged Cast Iron HYDRAULIC FLOATING VALVE

A small float valve controls a big hydrovalve mounted remotely. Its slow closing avoids noise and water hammering. The passage is total, the seal is perfect and does not require auxiliary energy by exploiting the water pressure that shall not be less than 1 bar.

Guarantee of functioning of the membrane even after years of inactivity as in fire-fighting systems. It is also suitable for flow rate wastewater control.



THREADED			FLANGED			
code	Ø	L	PN 16	PN 25	DN	L
VH10307	1½"		VH50309	VH60309	50	200
VH10308	2"	175	VH50310	VH60310	80/65	200
VH10309	2½"	230	VH50311	VH60311	80	280
VH10310	3"	230	VH50312	VH60312	100	300
			VH50313	VH60313	125	325
			VH50314	VH60314	150	350
			VH50315	VH60315	200	400
			VH50316	VH60316	250	450
			VH50317	VH60317	300	500

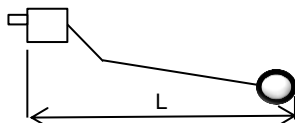
VG 100

AISI 316 FLOAT VALVE - PN 16



Body and metal components in AISI316




- UNI ISO 7/1 Male gas threaded end connection
- Working Pressure: 10 bar
- Operating temperature: from -20°C upto +150°C
- silicone seal
- full bore



code	Ø	L mm	Ø ball	thred.of ball
VG10004	1/2"	410	110	M6
VG10005	3/4"	500	160	M8
VG10006	1"	580	160	M8
VG10007	1¼"	580	160	M8
VG10008	1½"	620	200	M12
VG10009	2"	720	200	M12
VG10010	2½"	720	200	M12

VG 101

CONTROL FLOAT VALVE - PN 16

float valve					float		Fluid pressure		Ø ball mm		rate flow
CODE	range Ø	BODY	SEAT	cod.	Ø			Copper	S.ST		L/min
VG 101..	1/2" > 2"	BRASS	S.ST	..04	1/2"	0 - 5	100	90		19	
VG 105..	12" > 1"	AISI 304	S.ST	..05	3/4"	5 - 15	120	130			
BALL CODE				..06	1"	0 - 8	150	150		25	
Ø	PVC	COPPER	Ø	INOX	..07	1 1/4"	180	170			
100	VG15010	VG15210	90	VG15309	..08	1 1/2"	180	170		75	
120	VG15012	VG15212	130	VG15313	..09	2"	220	200			
150	VG15015	VG15215	150	VG15315		0 - 5	220				
180	VG15018	VG15218	170	VG15317		5 - 15	300				
220	VG15022	VG15222	200	VG15320		0 - 5	220				
300	VG15030	VG15230	-	-		5 - 15	300				



Suitable for installation both low and high pressure. Its slow closing avoids noise and water hammering.