

VB 210

PUSH BOTTON GAUGE COUPLINGS



Suitable for gas system (with low pressure)
Normally closed
Water hammering protect
push button pressure reader

code	Ø	L	H
VB21003	3/8"	54	115
VB21004	1/2"	58	115

VB 212

BRASS GAUGE COUPLINGS - PN16

male/female threaded



Code	Ø	Ø f	L	H
VB21202	1/4"	5	54	115
VB21203	3/8"	6	54	115
VB21204	1/2"	6	58	115

threaded Male/Female with plate



Code	Ø	Ø f	L	H	E
VB21702	1/4"	5	54	115	30
VB21703	3/8"	6	54	115	30
VB21704	1/2"	6	58	115	30

VB 215

CARBON STEEL - AISI GAUGE COUPLINGS



working pressure:210 bar
male/female threaded (gas / NPT)
drain cap

Ø f = passing hole

CARBON STEEL					
code	Ø	Ø f	L	H	E
VB21503	3/8"	6	54	115	
VB21504	1/2"	6	58	115	
AISI 316					
code	Ø	Ø f	L	H	E
VB23003	3/8"	6	54	115	
VB23004	1/2"	6	58	115	

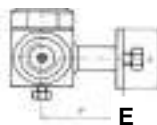
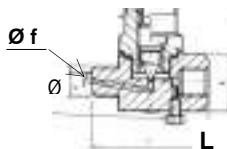
VB 220

CARBON STEEL - AISI GAUGE COUPLINGS WITH PLATE



H

working pressure:210 bar
male/female threaded (gas / NPT)
drain cap



CARBON STEEL					
code	Ø	Ø f	L	H	E
VB22003	3/8"	6	54	115	30
VB22004	1/2"	6	58	115	30
AISI 316					
code	Ø	Ø f	L	H	E
VB24003	3/8"	6	54	115	30
VB24004	1/2"	6	58	115	30

VB 301

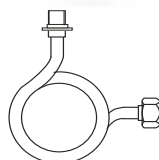
COILS



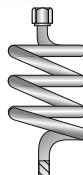
Code	Ø	Straight way coilend M/F
VB30102	1/4"	Copper Body - PN16
VB30103	3/8"	
VB30104	1/2"	
VB30202	1/4"	Chromium coated carbon steel body PN25
VB30203	3/8"	
VB30204	1/2"	
VB30303	3/8"	Stainless steel body PN 25
VB30304	1/2"	

Straight way coil M/F PN40

Code	Ø	Total passing hole
VB35202	1/4"	Carbon steel burnished body PN40
VB35203	3/8"	
VB35204	1/2"	
VB35303	3/8"	Stainless steel body - PN 40
VB35304	1/2"	



Code	Ø	Serpentine a via squadra
VB31203	3/8"	Copper body - PN 16
VB31204	1/2"	
VB31303	3/8"	Chromium coated carbon steel body PN25
VB31304	1/2"	
VB31403	3/8"	Stainless steel body PN 25
VB31404	1/2"	



Code	Ø	Five spiral coil
VB32003	3/8"	carbon steel body
VB32004	1/2"	
VB32103	3/8"	AISI 316 body
VB32104	1/2"	