

KV 21

PNEUMATIC TEMPERATURE INDICATORS AND CONTROLLERS

Temperature-sensing nitrogen-filled
 Bulb for liquids and gasses, material: S.S. ASTM A240 Type 316L
 Die cast aluminium with anti corrosive paint IP54
 Mounting: Wall or panel
 Range: 40.100.150.200.350 .400°C
 2 mt. capillary length
 Pneumatic conn. 1/8" GAS
 Precision: 1% v.f.s.
 Histeresys: ≤ 0,5%
 Non linearity: ≤ 0,5%

Repeatability: ≤ 0,5%
 Permissible amb. temperature: - 20 + 80°C
 Supply air pressure: 20 psi ± 1.5
 Output: 3÷15 psi

scale bar	0...16
0...1	0...25
0...1.5	0...40
0...2.5	0...60
0...4	0...100
0...6	0...160
0...10	0...250

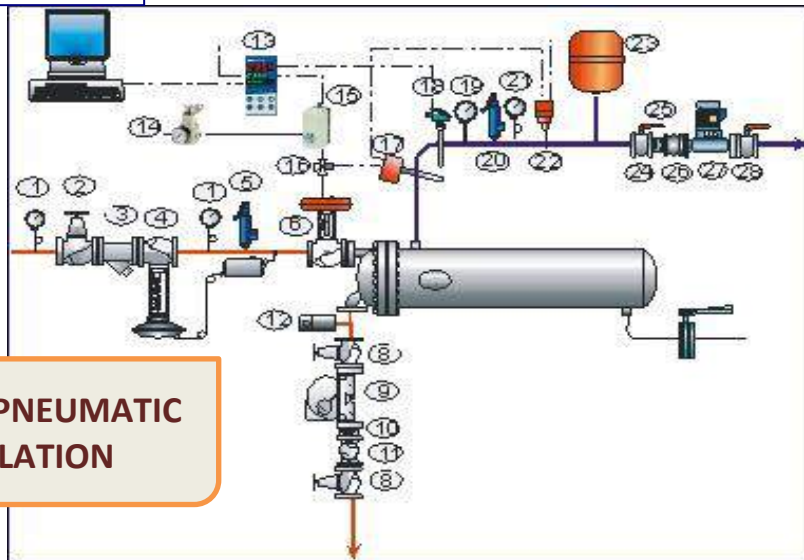
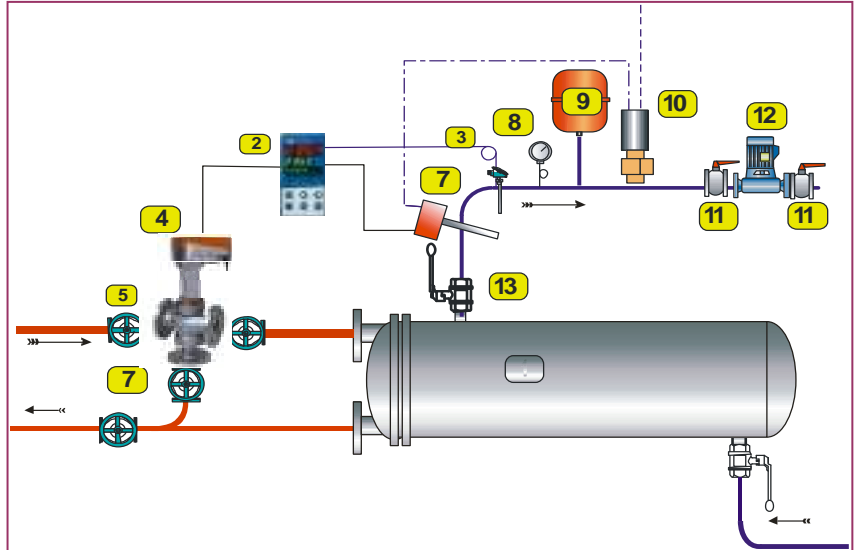
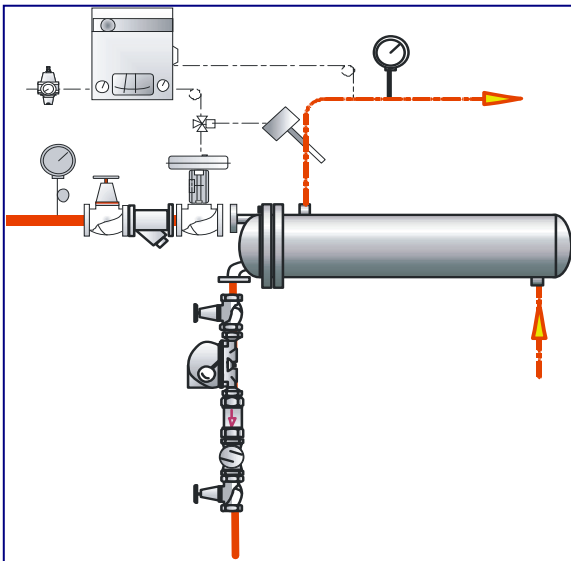


Codes	SERIES	B x H x L mm
	80	
KV21201	81P	170x225x100
KV21202	82P	
KV21203	83P	
-	-	
KV21205	85P	

FUNCTIONS
ON OFF
PROPORTIONAL
INTEGRAL
DERIVATIV
TRANSMITTER

Codes	SERIES	B x H x L mm
	300	
KV25201	321P	250x290x125
KV25202	322P	
KV25203	323P	
KV25204	324P	
KV25205	325P	

PNEUMATIC REGULATION



ELECTRO-PNEUMATIC REGULATION

1.35**PNEUMATIC POSITIONERS****Valvoid**

valvole industriali

VALVOIND Srl Via Pascoli, 5 - 24060 Bagnatica (Bergamo) Tel. 035.681919-Fax. 035.684461

KV901**SIMPLE ACTING PNEUMATIC POSITIONERS**

for linear and rotating regulation valves

Single acting positioner with input signal 3 ... 15 psi for installation on pneumatic diaphragm valves
 The device operates according to the principle of balance of forces. Compares the standard signal of a pneumatic regulator (3 ... 15 psi) with the valve stroke and transmit an amplified positioning pressure to the the servo motor (6 bar)

Body: IP54 Die casting alluminium

Mounting: Bracket

Input Signal: 0.2...1 bar (3...15psi)

Supply Air Pressure: 1.4 ± 1 bar

Ambient Temperature: - 20 + 120°C

Hysteresis: < 0.5 %

Connections: 1/4" NPT

CODES	MODEL	FUNCTION
KV90101	IP5000	FOR LINEAR VALVES
KV90110	IP5100	FOR ROTATING VALVES



Linear Valves Execution

KV902**SIMPLE ACTING ELECTRO-PNEUMATIC POSITIONERS**

Ex II 2G Ex ib IIC - for linear and rotating regulation valves

It's a simple acting positioner with input signal 4-20 mA for proportional control of pneumatic linear valves. The positioners operate by comparison of the signal, coming from the control unit, with the position of feedback lever joined to the valves stem. An amplified pressure, generates by the comparison of these two forces, operates directly on actuator diaphragm.

Positioning pressure (supply) range adjustable

from 0,2 ÷ 1 up to 0,2 ÷ 6 bar

Reversal Action Direct >> / invers <<



Rotating Actuator Execution

CODES	MODEL	FUNCTION
KV90201	IP 8000	FOR LINEAR VALVES
KV90210	IP 8100	FOR ROTATING VALVES

KV903**SMART HART ELECTRO-PNEUMATIC POSITIONERS****Electroswitch with features like the previous one but with transmitter and 2 limit switches**

The integrated microcomputer and sensor allow to easily modify and monitor remote parameters.

Display example Input value (%) 4-20mA signal. Two-wire technology.

Output electrical signals - HART communication protocol - Display

Supplied as standard with 4-20mA retransmission and 2 digital outputs as limit switches.

The HART protocol allows you to monitor and set all the parameters of the positioner.

The supply voltage of the circuit is obtained directly from the 4-20mA control signal and not

requires separate power supply.

Possibility to display: Position, Deviation and Input signal value (0-100%)

Internal panel for easy configuration of the various parameters

Body Die casting alluminium epoxy painted IP65

Mounting: Bracket

Connections: 1/4" NPT

Supply Air Pressure: 4 ± 6 bar

Input Signal: 0.2...1 bar (3...15psi)

Limit Temperature: - 20 + 120°C

CODES	MODEL	FUNCTION
KV 90301	IP8001	FOR LINEAR VALVES
KV 90310	IP8101	FOR ROTATING VALVES

1.36

ACCESSORIES FOR PNEUMATIC REGULATION

VALVOIND Srl Via Pascoli, 5 - 24060 Bagnatica (Bergamo) Tel. 035.681919-Fax. 035.684461

Valvoind

valvole industriali

KV 9..

Electro-pneumatic converter

Instrument for conversion of a standard d.c. current signal into a standard pneumatic signal, for the change-over from electrical controllers to pneumatic control valves, or from electrical measuring system to pneumatic controllers. The PC13 is a force balance device, which converts the input signal 4...20 mA, 0...20 mA or 1...5 V, 0...10 V to a proportional output signal 3..15 psi (0,2...1 bar), 2...20 psi (0,14...2 bar) or 4(6)...30 (0,3...2 bar), with a respective supply pressure of 25 or 45 psi (1,7 - 3bar).

Supply Air Pressure: 1.4 ± 1 bar

Hysteresis: < 0.2 %

Ambient Temperature: - 20 + 60°C

Connections: 1/4" NPT

Dimension: 70 x 140 x 80

Rilsan Tube 6 x 4



4..20mA > 3..15 psi	0..10 V > 3..15 psi	MODEL	FEATURES
KV 91001	KV 91101	PC 13	For rear panel mounting
KV 91002	KV 91102	PC 15	With IP 55 die-cast aluminum body
KV 91003	KV 91103	PC 15 Atex	II 1G Ex ia IIC T6,T5

4..40 mA > 0,5/8 bar	0..10 V > 3..15 psi	MODEL	FEATURES
KV 91301	KV 91401	PC 18	IP 54 (140 X 70 X 78)
KV 91302	KV 91402	PC 18 Atex	94/9/EC(ATEX): II 1G Ex ia IIC T6,T5

KV 9..

COMPRESSED AIR ACCESSORIES

CODES	Ø	THREADED AIR FILTER REGULATOR
KV 91802	1/4"	Air Filter Regulator 0.8 bar Technopolymer bowl HDPE porous filter element from 20µ Manual and semi-automatic water drain valve With guard protection
KV 91803	3/8"	
KV 91804	1/2"	
KV 91805	3/4"	
KV 91806	1"	



CODES	Ø	LUBRICATOR
KV 91502	1/4"	Alluminium Body
KV 91503	3/8"	
KV 91504	1/2"	
KV 91505	3/4"	
KV 91506	1"	



CODES	CODES	Ø	CONDENSATE SEPARATORS
AISI 316	A105		WITH INNER DIAPHRAGM AND CONNECTIONS FOR THE WATER DRAIN
KV 91704	KV 91604	1/2"	
KV 91705	KV 91605	3/4"	
KV 91706	KV 91606	1"	
KV 91707	KV 91607	1 1/4"	
KV 91708	KV 91608	1 1/2"	
KV 91709	KV 91609	2"	



CODES	Ø	COMPRESSED AIR STEAM TRAP
KV 92004	1/2"	Alluminium Body - connection: R 1/2" operating temperature range: 1,5 to 65 °C (35 to 149 °F) - operating pressure range: 0 - 20 bar (0 - 290 psi)



2.00

DANFOSS PRESSURE SWITCH



VALVOID Via Pascoli,5 - 24060 Bagnatica (Bergamo) Tel. 035.681919 Fax. 035.684461

Fluid	Air, gas and liquid	Protection	IP 66
Temperature	-50°C +150°C +400°C with coil RT 113 = max 90°C	Contact load	IP 54 with manually reset AC =10A 440V DC=12W 230V

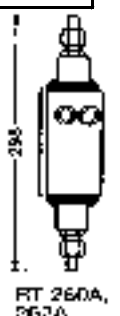
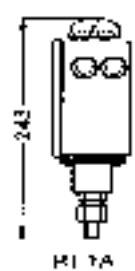
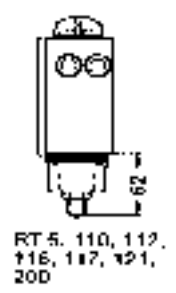
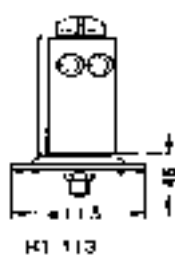
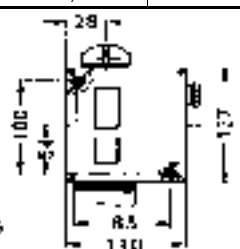
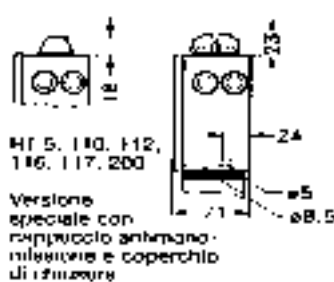
AS 101 DANFOSS PRESSURE SWITCH

Model	Working pressure bar	Adjustable differential bar	Max. Pressure bar	Test pressure bar	Ø Connections	SPDT	Alarm contacts		SPDT
							max	min	
CODES	←					DIGIT TO BE ADDED TO THE CODE			
						A	B	C	D
AS10101	RT 121	-1 ÷ 0	0,09 -0,04	7	8	G 3/8 A	017-5215		
AS10102	RT 113	0 ÷ 0,3	0,01 -0,05	0,4	0,5	G 3/8 A	017-5196		
AS10104	RT 112	0,1 -1,1	0,07 -0,16	7	8	G 3/8 A	017-5191		017-5193
AS10105	RT 112	0,1 ÷ 1,1	0,07	7	8	G 3/8 A		017-5192	
AS10106	RT 110	0,2 ÷ 3	0,08 -0,25	7	8	G 3/8 A	017-5291		017-5292
AS10107	RT 1	-0,8 ÷ 5	0,5 -1,6	22	25	7/16-20 UNF	017-5245		
AS10108	RT 1	-0,8 ÷ 5	0,5	22	25	7/16-20 UNF			017-5246
AS10109	RT 1A	-0,8 ÷ 5	0,5 -1,6	22	25	G 3/8 A1)	017-5001		
AS10110	RT 1A	-0,8 ÷ 5	0,5	22	25	G 3/8 A1)			017-5002
AS10111	RT 1A	-0,8 ÷ 5	1,3 -2,4	22	25	G 3/8 A1)	017-5007		
AS10112	RT 200	0,2 ÷ 6	0,25 -1,2	22	25	G 3/8 A	017-5237		017-5240
AS10113	RT 200	0,2 ÷ 6	0,25	22	25	G 3/8 A		017-5238	017-5239
AS10114	RT 116	1 ÷ 10	0,3 -1,3	22	25	G 3/8 A	017-5203		017-5200
AS10115	RT 116	1 ÷ 10	0,3	22	25	G 3/8 A		017-5204	017-5199
AS10116	RT 5	4 ÷ 17	1,2 -4	22	28	G 3/8 A	017-5255		017-5253
AS10117	RT 5	4 ÷ 17	1,2	22	28	G 3/8		017-5094	
AS10118	RT 5A	4 ÷ 17	1,2 -4	22	28	G 3/8 A1)	017-5046		
AS10119	RT 5A	4 ÷ 17	1,2	22	28	G 3/8 A1)		017-5047	
AS10120	RT 117	10 ÷ 30	1 -4	42	47	G 3/8 A	017-5292		017-5296
AS10121	RT 19W	5 ÷ 25	1,2	42	47	G 3/8 A	017-5895		017-5296



AS 201 DANFOSS DIFFERENTIAL PRESSURE SWITCH

CODES	Type	Working pressure bar	Adjustable differential bar	Neutral zone bar	Operation range bar	Max. Operating pressure	Test pressure bar	Ø Connections	Code n°
AS20101	RT266AL	0 -0,9	0,05	0,05 -0,23	-1 -6	7	8	G 3/8 A1)	017D0081
AS20102	RT263AL	0,1 -1,0	0,05	0,05 -0,23	-1 -6	7	8	G 3/8 A1)	017D0045
AS20103	RT262AL	0,1 -1,5	0,1	0,1 -0,33	-1 -9	11	13	G 3/8 A1)	017D0043
AS20104	RT262A	0,1 -1,5	0,1		-1 -9	11	13	G 3/8 A1)	017D0025
AS20105	RT262A	0 -0,3	0,035		-1 -10	11	13	G 3/8 A1)	017D0027
AS20106	RT260AL	0,5 -4	0,3	0,3 -0,9	-1 -18	22	25	G 3/8 A1)	017D0048
AS20107	RT260A	0,5 -4	0,3		-1 -18	22	25	G 3/8 A1)	017D0021
AS20108	RT260A	0,5 -6	0,5		-1 -36	42	47	G 3/8 A1)	017D0023
AS20109	RT260A	1,5 -11	0,5		-1 -31	42	47	G 3/8 A	017D0024
AS20110	RT265A	1 -6	0,5		-1 -36	42	47	G 3/8 A1)	017D0072



2.03

IP 65 PRESSURE SWITCH

VALVOIND Srl Via Pascoli, 5 - 24060 Bagnatica (Bergamo) Tel. 035.681919-Fax. 035.684461

Valvoind

valvole industriali

AS 501

TRAFAG IP 65 PRESSURE SWITCH

CODES	MODELS	PRESSURE	DIFFERENTIAL		press.	temp.	Volt / Ampere		sensor	material	Ø
		RANGE bar	fixed bar	adjust. bar	max bar	max °C	AC	DC			
AS50601	P 1.5	-0.9..+1.5	0.1		10	150	500 V 10 A	30 V 15 A	bellow	brass	1/4"
AS50602	P 2.5	0.2..2.5	0.1		10	150					
AS50603	P 4	0.4	0.2		12	150					
AS50604	P 6	0.6	0.2		12	150					
AS50605	P 10	1..10	0.4		24	150					
AS50606	P 16	1..16	0.4		24	150					
AS50607	P 25	2..25	1.0		40	150					
AS50608	P 40	4..40	1.0		40	150					
AS50701	PS 1.5	-0.9..+1.5	0.1		10	150	500 V 10 A	30 V 15 A	bellow	brass	1/4"
AS50702	PS 2.5	0.2..2.5	0.1		10	150					
AS50703	PS 6	0..6	0.2		12	150					
AS50704	PS 16	1..16	0.4		24	150					
AS50705	PS 40	4..40	1.0		40	150					
AS50801	PV6	0..6		0.4..3.2	12	150	500 V 10 A	30 V 15 A	bellow	brass	1/4"
AS50802	PV16	1..16		1..7.5	24	150					
AS50803	PV40	4..40		3..18	40	150					
AS50901	PVF 1.5	-0.9..+1.5		0.06..0.2	10	150	500 V 10 A	30 V 15 A	bellow	brass	1/4"
AS50902	PVF 2.5	0.2..2.5			10	150					
AS50903	PVF 6	0..6		0.2..0.6	12	150					
AS50904	PVF 16	1..16		0.5..1.6	24	150					
AS51001	PK 10	1..10		0.45..0.9	100	135	500 V 10 A	30 V 15 A	piston	INOX	1/4"
AS51002	PK 40	4..40		1.8..3.4	200	135					
AS51003	PK 100	10..100		3.2..7.5	200	135					
AS51004	PK 250	25..250		5.2..16	400	135					

AP 520

TRAFAG DIFFERENTIAL PRESSURE SWITCH

AS52001	PSTD 4	-1..+6	0..+4	0,2	8	250 V 10 A	24 V 2 A	bellow	brass	1/8"
AS52003	PSTD 6	-1..+8	0..+6	0,3	12					
AS52101	PD 3,4	-0,6..+3,4		0,16	12	500 V 10 A	30 V 15 A	bellow	brass	1/8"
AS52102	PD 6	0..6								
AS52103	PD 16	1..16								

AS 900

PRESSURE SWITCH FOR POWER PLANTS

CODES	MODEL	RANGE	IP	CONNECT.	DESCRIPTION
AS95101	B12CN	0.8 BAR	IP40	1/4"	Regulation Pressure Switch
AS95102	B12CRNY	0.8 BAR	IP65	1/4"	
AS95103	B12DNY	5..16 BAR	IP65	1/4"	
AS95104	B12FNY	12..50 BAR	IP65	1/4"	
AS95105	B12GNY	25..150 BAR	IP65	1/4"	
AS95106	B12HNY	60..300 BAR	IP65	1/4"	
AS95201	B01CM	3..7 BAR	IP40	1/4"	MANUALLY RESET PRESSURE SWITCH ISPESL approved
AS95202	B12MN	1..5 BAR	IP40	1/4"	



2.05

PED PRESSURE SWITCH IV class

VALVOIND Via Pascoli, 5 - 24060 Bagnatica (Bergamo) Tel. 035.681919 Fax. 035.680954

Valvoind

valvole industriali

AS 150**SAUTER PRESSURE SWITCH APPROVED PED - IV class**

For regulating and monitoring pressure in liquids, gases and vapours. SIL 2 certified as per EN 61508

DESCRIPTION

Adjustable lower switching point
Adjustable switching difference
Sealable
Pressure sensor made of stainless steel for aggressive media
Approved for marine applications

FEATURES

Pressure connection : 1/2" gas
Admissible ambient temperature : -20...+70°C
Maximum load contacts : 4 mA / 5V a 10 A / 250V
Max. sensor temp. : 110° C
Standard connector with plug-in socket

PRESSURE SWITCH (bar)

MODEL DSF		REGULATION RANGE	ADJUSTABLE DIFFERENTIAL	(bar) MAX PRESSURE
CODES	TYPE			
AS15001	DSF 125	-1...1,5	0,25...0,75	12
AS15002	DSF 127	-1...5	0,3...1,5	16
AS15003	DSF 135	0...0,6	0,12...0,60	12
AS15004	DSF 138	0...1,6	0,25...0,7	12
AS15005	DSF 140	0...2,5	0,25...0,75	12
AS15006	DSF 143	0...6	0,3...1,5	16
AS15007	DSF 146	0...10	0,8...3,0	18
AS15008	DSF 152	0...16	1,2...3,8	60
AS15009	DSF 158	0...25	1,5...8,0	60
AS15010	DSF 170	15...40	1,7...802	60

**AS 160****SAUTER SAFETY PRESSURE SWITCH W/MANUAL RESET
PED - IV class****APPROVED****SPECIALLY DESIGNED PRESSURE LIMITER**

Features as above

MODEL DSH		REGULATION RANGE	ADJUSTABLE DIFFERENTIAL	(bar) MAX PRESSURE
CODES	TYPE			
AS16005	DSH 127	-1...5	-0,4	16
AS16006	DSH 143	0...6	-0,45	16
AS16007	DSH 146	0...10	-0,8	18
AS16008	DSH 152	0...16	-1,5	60
AS16009	DSH 158	0...25	-1,8	60
AS16010	DSH 170	15...40	-2,0	60

**AS 250****SAUTER DIFFERENTIAL PRESSURE SWITCH****DIFFERENTIAL PRESSURE SWITCH**

MODEL DSD		REGULATION RANGE	ADJUSTABLE DIFFERENTIAL	(bar) MAX PRESSURE
CODES	TYPE			
AS 25004	DSD 127	0,2...1,0	0,17...1,4	6
AS 25005	DSD 140	0,4...2,5	0,40...1,6	10
AS 25006	DSD 143	0,5...6,0	0,45...2,2	12
AS 25007	DSD 152	1,0...1,6	0,60...3,4	25

**STEADY DIFFERENTIAL**

AS25501	DSD 134	0,05...0,4	0,04	6
---------	---------	------------	------	---

AT 100

PRESSURE TRANSMITTER

Smallest design
Completely welded steel sensor system without additional seals

Excellent long-term stability

Optional: Fivefold overpressure resistance

Optional: Switching output 1 or 2 PNP transistors

Measuring principle: Thin film on steel

Accuracy: 25°C typ. ± 0.5 % FS typ.

Media temperature: -40°C ... +125°C

Output signal: 4 ... 20 mA, 0.5 ... 4.5 VDC, 0...5

VDC, 1 ... 5 VDC, 1 ... 6 VDC, 0 ... 10 VDC, 0.1 ...

10.1 VDC, 0.5 ... 4.5 VDC ratiometric

Switching output: 1 or 2 PNP transistors

Ambient temperature: -40°C ... +125°C

(Cable PVC 22: -5°C ... +60°C)

(Cable PUR 24: -40°C ... +70°C)

Protection Grade: IP65 according to

IEC 529 / EN 60529

EMC immunity: According to EN 61000

EMC 89/336/CEE - PED 97/23/CE

Conformity



RANGE	Threaded IP 65		Overlooked	TRICLAMP	WITH DISPLAY
	1/4"	1/2"	Film		
BAR	AT10101	AT10201	AT11001	AT11501	AT12001
-1...0	AT10102	AT10202	AT11002	AT11502	AT12002
0...0.6	AT10103	AT10203	AT11003	AT11503	AT12003
0...1	AT10104	AT10204	AT11004	AT11504	AT12004
0...1.6	AT10105	AT10205	AT11005	AT11505	AT12005
0...2.5	AT10106	AT10206	AT11006	AT11506	AT12006
0...4	AT10107	AT10207	AT11007	AT11507	AT12007
0...6	AT10108	AT10208	AT11008	AT11508	AT12008
0...10	AT10109	AT10209	AT11009	AT11509	AT12009
0...16	AT10110	AT10210	AT11010	AT11510	AT12010
0...25	AT10111	AT10211	AT11011	AT11511	AT12011
0...40	AT10112	AT10212	AT11012	AT11512	AT12012
0...60	AT10113	AT10213	AT11013	AT11513	AT12013
0...100	AT10114	AT10214	AT11014	AT11514	AT12014
0...160	AT10115	AT10215	AT11015	AT11515	AT12015
0...250	AT10116	AT10216	AT11016	AT11516	AT12016
0...400	AT10117	AT10217	AT11017	AT11517	AT12017
0...600	AT10118	AT10218	AT11018	AT11518	AT12018

AT 200

DIFFERENTIAL PRESSURE TRANSMITTER

Industrial pressure switches, robust and and reliable.

Used in all types of industry, chemical, petrochemical, pharmaceutical, research, food, aerospace.

All CE marked in compliance with EN 60730-1.

Robust. Few moving parts.

Diaphragm drive.

Wet parts resistant to aggressive available.

Easily customizable.

IP 65 design.

Weight 0.9 kg.

USE

In ventilation and air conditioning systems, in the control of filters in driers, in ovens, in thermal power stations, in chimneys as exchanging pneumatic connections can change the sign of differential pressure the P-SENSOR can be used for vacuum measurements.



IP 54		
Pa	Std.	square root extraction
0..25	AT20001	AT20101
0..50	AT20002	AT20102
0..62,5	AT20003	AT20103
0..100	AT20004	AT20104
0..125	AT20005	AT20105
0..200	AT20006	AT20106
0..250	AT20007	AT20107
0..500	AT20008	AT20108
0..1000	AT20009	AT20109
0..1870	AT20010	AT20110
0..3750	AT20011	AT20111
0..7500	AT20012	AT20112



IP 65		
mBar	Std.	square root extraction
0..0.5	AT21001	AT21101
0..1	AT21002	AT21102
-1..+1	AT21003	AT21103
0..2.5	AT21004	AT21104
0..6	AT21005	AT21105
0..10	AT21006	AT21106
0..25	AT21007	AT21107
0..50	AT21008	AT21108
0..100	AT21009	AT21109
0..200	AT21010	AT21110
0..500	AT21011	AT21111
0..1000	AT21012	AT21112



Smart		
mBar	Std.	square root extraction
0..0.5	AT22001	AT22101
0..1	AT22002	AT22102
-1..+1	AT22003	AT22103
0..2.5	AT22004	AT22104
0..6	AT22005	AT22105
0..10	AT22006	AT22106
0..25	AT22007	AT22107
0..50	AT22008	AT22108
0..100	AT22009	AT22109
0..200	AT22010	AT22110
0..500	AT22011	AT22111
0..1000	AT22012	AT22112

2.10

MANOMETER



VALVOIND Srl Via Pascoli, 5 - 24060 Bagnatica (Bergamo) Tel. 035.681919-Fax. 035.684461



CODE	...01	...02	...03	...04	...05	...06	...07	...08	...09	...10	...11	...12	BAR
RANGE	0/0,6	0/1	0/1,6	0/2,5	0/4	0/6	0/10	0/16	0/25	0/40	0/60	0/100	

RADIAL MOUNTING							
Ø	CASE		WATER		GAS		STEAM
	CONNECT.		MAN	VAC.GA	MAN	VAC.GA	
60	STEEL	BRASS	AM100	AM124	AM150	AM165	AM180
		ST.STEEL	AM101	AM125	AM151	AM166	-
	ST.STEEL	BRASS	AM102	AM126	AM152	AM167	AM181
		ST.STEEL	AM103	AM127	-	-	-
	STEEL/BRASS	GLYCEROL	AM104	AM128	-	-	-
		GLYCEROL	AM105	AM129	AM153	AM168	AM182
80	STEEL	BRASS	AM106	AM130	AM154	AM169	AM183
		ST.STEEL	AM107	AM131	AM155	AM170	AM184
	ST.STEEL	BRASS	AM108	AM132	-	-	-
		ST.STEEL	AM109	AM133	-	-	-
	STEEL/BRASS	GLYCEROL	AM110	AM134	AM156	AM171	AM185
		GLYCEROL	AM111	AM135	AM157	AM172	AM186
100	STEEL	BRASS	AM112	AM136	AM158	AM173	AM187
		ST.STEEL	AM113	AM137	-	-	-
	ST.STEEL	BRASS	AM114	AM138	-	-	-
		ST.STEEL	AM115	AM139	AM159	AM174	AM188
	STEEL/BRASS	GLYCEROL	AM116	AM140	AM160	AM175	AM189
		GLYCEROL	AM117	AM141	AM161	AM176	AM190
150	STEEL	BRASS	AM118	AM142	-	-	-
		ST.STEEL	AM119	AM143	-	-	-
	ST.STEEL	BRASS	AM120	AM144	AM162	AM177	-
		ST.STEEL	AM121	AM146	AM163	AM178	AM191
	STEEL/BRASS	GLYCEROL	AM122	AM147	-	-	-
		GLYCEROL	AM123	AM148	-	-	-

REAR MOUNTING							
Ø	CASE		WATER		GAS		STEAM
	CONNECT.		MAN	VAC.GA	MAN	VAC.GA	
60	STEEL	BRASS	AM200	AM224	AM250	AM265	AM280
		ST.STEEL	AM201	AM225	AM251	AM266	-
	ST.STEEL	BRASS	AM202	AM226	AM252	AM267	AM281
		ST.STEEL	AM203	AM227	-	-	-
	STEEL/BRASS	GLYCEROL	AM204	AM228	-	-	-
		GLYCEROL	AM205	AM229	AM253	AM268	AM282
80	STEEL	BRASS	AM206	AM230	AM254	AM269	AM283
		ST.STEEL	AM207	AM231	AM255	AM270	AM284
	ST.STEEL	BRASS	AM208	AM232	-	-	-
		ST.STEEL	AM209	AM233	-	-	-
	STEEL/BRASS	GLYCEROL	AM210	AM234	AM256	AM271	AM285
		GLYCEROL	AM211	AM235	AM257	AM272	AM286
100	STEEL	BRASS	AM212	AM236	AM258	AM273	AM287
		ST.STEEL	AM213	AM237	-	-	-
	ST.STEEL	BRASS	AM214	AM238	-	-	-
		ST.STEEL	AM215	AM239	AM259	AM274	AM288
	STEEL/BRASS	GLYCEROL	AM216	AM240	AM260	AM275	AM289
		GLYCEROL	AM217	AM241	AM261	AM276	AM290
150	STEEL	BRASS	AM218	AM242	-	-	-
		ST.STEEL	AM219	AM243	-	-	-
	ST.STEEL	BRASS	AM220	AM244	AM262	AM277	-
		ST.STEEL	AM221	AM245	AM263	AM278	AM291
	STEEL/BRASS	GLYCEROL	AM222	AM246	-	-	-
		GLYCEROL	AM223	AM247	-	-	-