

5.59

SAMPLE COOLERS



VALVOIND Srl Via Pascoli, 5 - 24060 Bagnatica (Bergamo) Tel. 035.681919-Fax. 035.684461

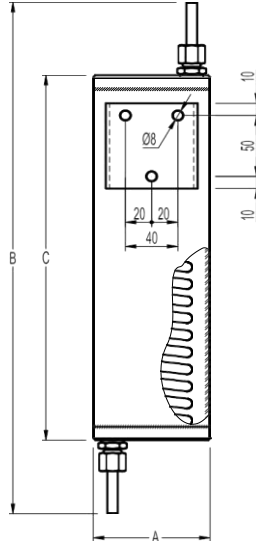
**SC32
SC132**

SAMPLE COOLERS

PN25

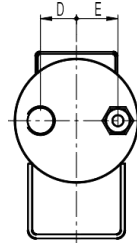
Ø 1/2"

- OPTIONS**
Sample inlet valve. Cooling water inlet valve.
Temperature indicator. Bolted top plate.
Different connection sizes and materials under request against extra price.
Double coil high pressure design for larger capacities.
- USE**
Steam boilers and hot water systems.
- MODELS**
SC32/SS - SC132/SS - stainless steel body and coil.
- CONNECTIONS**
SC32 - SC132
Cooling water inlet/outlet : 1/2" on body (BSP or NPT)
Sample tube inlet/outlet : 8 mm O/D
- INSTALLATION**
Vertical installation



MATERIALS	
DESIGNATION	MATERIAL
	SC32 - SC132
Body	A ISI 304 / 1.4301
Covers	A ISI 304 / 1.4301
Coil	AISI 316L / 1.4404
Compression fittings	AISI 316Ti / 1.4571
Discharge tube	AISI 316L / 1.4404
Thermometer connector	A ISI 316 / 1.4401

EN10204 3.1 certificate available if requested with the order.



LIMITING CONDITIONS				
Model	BODY		COIL	
	Pressure bar	Related Tem p. °C	Pressure bar	Related Tem p. °C
SC32 - SC132	20	120	110	400
			90	450

Minimum operating temperature : -10°C
Design code : AD - Merkblatt

DIMENSIONS (mm)						
MODEL	A	B	C	D	E	WGT Kg
SC32	90	420	300	26	30	3,9
SC132	90	520	400	26	30	4,8

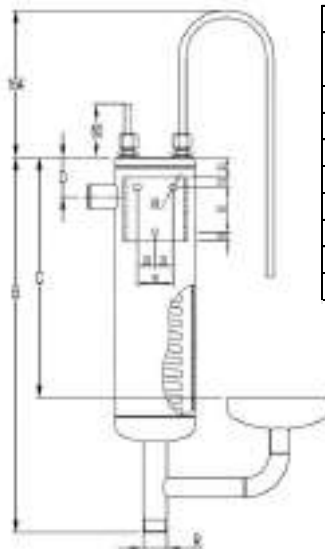
**SC32F
SC132F**

**SAMPLE COOLERS
(With Funnel)**

PN25

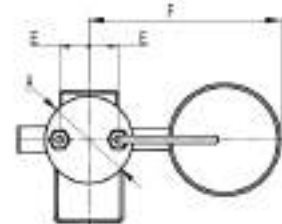
**Ø 1/2"
DN15**

- OPTIONS**
Sample inlet valve. Cooling water inlet valve. Temperature indicator. Compression fittings. Bolted top plate.
Different connection sizes and materials under request against extra price.
- USE**
Steam boilers. Hot water systems.
- MODELS**
SC32F/SS and SC132F/SS - stainless steel body and coil.
- CONNECTIONS**
Cooling water body inlet 1/2", outlet 3/4" (BSP or NPT)
Sample tube inlet/outlet: 8 mm O/D
- INSTALLATION**
Vertical installation.



MATERIALS	
DESIGNATION	MATERIAL
	SC32F - SC132F
Body and Funnel	A ISI 304 / 1.4301
Covers	A ISI 304 / 1.4301
Coil	AISI 316L / 1.4404
Compression fittings	AISI 316Ti / 1.4571
Discharge tube	AISI 316L / 1.4404
Thermometer connector	A ISI 316 / 1.4401

EN10204 3.1 certificate available if requested with the order.
* Stainless steel available against extra price



LIMITING CONDITIONS				
Model	BODY		COIL	
	Pressure bar	Related Tem p. °C	Pressure bar	Related Tem p. °C
SC32F - SC132F	20	120	110	400
			90	450

Minimum operating temperature : -10°C
Design code : AD - Merkblatt

DI MENSIONS (mm)								
MODEL	A	B	C	D	E	F	R	WGT Kg
SC32F	90	490	340	43	30	185	3/4"	4,5
SC132F	90	590	340	43	30	185	3/4"	5,5